

# Cruis'n with the



Chapter FL1-A2 Tallahassee, Florida

**July 2008**

**CHAPTER STAFF**

**CHAPTER DIRECTOR:**  
Lenton & Leucetia Stephens  
(850) 539-5084

**ASST. CHAPTER DIRECTOR:**  
Brian Eiler  
(850) 562-0999

**TREASURER/SECRETARY:**  
Sonny Rollo  
(850) 893-6990

**RIDE COORDINATOR:**  
Charles Couch  
(850) 562-1399

**RIDE COMMITTEE:**  
Charles Couch  
(850) 562-1399  
George Walsh  
(850) 539-1228  
Bob Carraway  
(850) 875-1368  
Brian Eiler  
(850) 562-0999

**RIDER EDUCATOR:**  
Jim Zumbrunn  
(850) 893-6990

**NEWSLETTER EDITOR:**  
Leucetia Stephens  
(850) 539-5084

**PUBLIC RELATIONS:**  
George Walsh  
(850) 539-1228

**PHONE COORDINATORS:**  
Sonny Rollo  
(850) 562-4293  
George Walsh  
(850) 539-1228

**SUNSHINE LADY:**  
Carolyn Campbell  
(850) 977-4901

**WEBMASTER:**  
Karen Share  
(850) 925-0345

**We're On the Net!**  
Visit our web site at  
<http://www.canopyroadcruisers.com/>

Send in your e-mail address to be on the Chapter e-mail list!  
[leu3241@earthlink.net](mailto:leu3241@earthlink.net)

**Florida GWRRRA Home Page Address**  
<http://floridadistrict.com>

**Chapter FL1-A2 Information**

**General Membership Meeting**  
Second Thursday monthly  
At  
Golden Corral Buffet  
Dinner at 6:30 pm  
Meeting at 7:30 pm

**Supper Rides Every Third Thursday**

**We miss you when you're not there!**  
**Welcome to all visitors and new members!!!**  
**We're glad you're with us!!!**

**NATIONAL, REGIONAL & DISTRICT**

**EXECUTIVE DIRECTOR:**  
Melissa Nordeoff

**REGION A DIRECTOR:**  
Bob & Nan Shrader

**REGION A EDUCATORS**  
Ron & Pam Lantz

**SENIOR DISTRICT DIRECTOR:**  
Ed & Jeanette Carr

**ASST. DISTRICT DIRECTOR:**  
Ed Porter

**ASST. DISTRICT DIRECTOR:**  
Nate & Danelle Kinion

**ASST. DISTRICT DIRECTOR:**  
Bill & Cheryl Smith

**ASST. DISTRICT DIRECTOR:**  
Bruce Griffing & Mary Haight

**ASST. DISTRICT DIRECTOR**  
Ed & Jeanette Carr

**DISTRICT RIDER EDUCATOR:**  
Joe & Jan Mazza

**DISTRICT ADMIN ASSISTANT:**  
Cliff & Joyce Hotchkiss

**FLORIDA PUBLIC RELATIONS:**  
Pat & Judy Seadorf

**DISTRICT COY COORDINATOR:**  
Jake & Joanne Jacob

**DISTRICT MAD COORDINATOR :**  
Jim & Linda McGinnis

**DISTRICT WEBMASTER/MISTRESS**  
Thomas & Penny Treadwell

**DISTRICT TREASURER**  
Bill & Austine Barbour

**TABLE OF CONTENTS**

Anniversaries ..... 5

Birthdays ..... 5

CD Goldline ..... 2

Florida Events ..... 4

From the ADD ..... 3

Fun Report ..... 3

Kudos ..... 5

Local Dinner Rides ..... 4

New Bike Club ..... 5

Notes From Last Meeting ..... 5

Region Events ..... 2

Safety Corner ..... 2

Welcome ..... 5

# Friends for Fun, Safety and Knowledge



## CD GOLDLINE

Hi Fellow Gold Wing Lovers:

Sorry for the delay in this month's newsletter, between Wing Ding and our computer crashing we're behind schedule.

We just returned from Greenville and Wing Ding last night. We left on Sunday evening stopping at Perry GA. for the night and then on to Greenville on Monday.

Tuesday morning Leucetia and I rode over to Dillard GA for lunch at the Dillard House. We had five kinds of meat and twelve different kinds of vegetables and dessert. .

Wednesday morning we met up with Terry & Silvia and Dave & Pat, and did a Poker Run to the Blue Ridge and back to Greenville, stopping at Brevard N.C. for lunch. Wednesday was an unofficial day as Vendors were still setting up.

Thursday was a hang out at the vendors, take seminars and ending the day with the Talent show.

Vendors said Thursday was their best day ever!! Bling---Bling---Ching,---Ching. Were all broke! Terry got a new trailer; Marvin & JoNell and Leucetia & I just picked up a few motorcycle rider accessories.!

Friday was another Poker Run Day. Leucetia & I, Steve & Suzanne Conrader, two of their friends, Marvin & JoNell Culverson, George & Pat Walsh, Gus Daniels & his Granddaughter, rode another route to the Blue Ridge and back in time for George & Pat to ride the big parade.

Saturday was another day to ride the mountains again. Terry & Sylvia, Marvin & Jo-Nell joined us for a return to the Dillard House for a late lunch. We then rode back to Greenville S.C. by way of Highlands, Cashiers, The Blue Ridge, and Brevard N.C.

We all had a ball!

See you at Thursdays Meeting.

Ride Safe and Enjoy the Ride

Lenton and Leucetia Stephens



*From: Jim Zumbrunn*

*Rider Educator*

### **FAILURE TO NEGOTIATE A CURVE**

By Jerry Palladino

Recently, on Full Throttle Television, I did a question and answer session with Paul Allen. Paul told me he is aware that the most common crash is when a vehicle violates the motorcyclists' right of way. But, Paul said he was surprised that the 2<sup>nd</sup> most common crash was strictly the motorcyclist's fault, and that is, "failure to negotiate a turn."

A week after that Full Throttle segment was filmed, I happened to be riding with some friends when I witnessed that exact crash.

I know I've discussed this type of incident before, but I feel compelled to go over it once again since it happens so often. Here are the circumstances of the failure to negotiate a curve which I just witnessed.

I was 5<sup>th</sup> in a staggered group of 8 riders. We were cruising down the Ozello Trail in Homosassa at a leisurely pace. If you're not familiar with the Ozello Trail, it's a winding, two lane road which winds for five or six miles from U.S. 19 to the Gulf of Mexico. On both sides of the road there is a grassy, soft shoulder about six feet wide that dips into the narrow Homosassa River. Most of the turns can be taken at 40 mph, but our pace was closer to 20 mph. The rider in front of me was on a two or three year old Fat Boy and had over 30 years of riding experience.

As we entered the second half of the S curve, I noticed the last part curving to the left with a slight decreasing radius. The rider in front of me was leaning slightly more than the bike would when it was sitting on the kickstand. In other words, it was no where near it's lean limit. When the rider on the Fat Boy realized the turn was becoming sharper,

she panicked, let off the throttle, straightened up the bike, then looked at the edge of the road and the river and right off the road and into the river she went. Amazingly, her only injuries were a few cuts and bruises.

Now, the question is, why did an experienced rider straighten up her bike and ride right off the road, and, how can you prevent this from happening to you?

There are several reasons for the crash. First, she didn't know her bike's leaning limit. Therefore, she thought she was at that limit when she actually was no where near it. Second, she was focused on the bike in front of her, instead of at the end of the turn. By not focusing far enough in front of her., the decreasing radius came into her view very quickly which made her think she was going much faster than her actual speed. Last but not least, she then fixated on the river and since your hands follow your eyes, that's where she went.

To avoid this type of crash, find your bike's lean limits under controlled conditions. Practice turning ever tighter circles in a parking lot until you get comfortable leaning your bike until the pegs or boards scrape the ground, then practice making wider turns in both directions at speeds above 15 mph. Keep your head and eyes UP and look well ahead of the bike. Never look down or anyplace you don't want the bike to go. Remember, at speeds above 15 mph, you're counter-steering. Push left to go left, push right to go right. In other words, if you need to turn sharper in a left turn, push harder on the left grip. It's the same to the right.

Never- ever, focus on the bike directly in front of you. Instead, focus on the end of the turn. Do your braking before you enter the curve then release the brakes and roll on the throttle. This will cause the bike to rise up on it's suspension and give it more lean angle before any hard parts hit the tarmac. That's all there is to it. It just takes a little practice of the proper techniques. If you wait until you're in the middle of a curve on a winding road with water, guard rails, or even a cliff off the shoulder, it's too late to practice.

You can either rely on dumb luck to get you through a tricky situation or you can rely on skill. It's up to you.

## A.D.D. Report

From: Nate & Danelle Kinion

Ride Safe.  
Nate and Danelle

## Fun Report

## GWRRA NEWS

### 2008 FLORIDA GWRRA EVENTS



July 3-6	Wing Ding 30	Greenville SC
Sep 6	FL1-A Picnic/Auction	Tampa FL
Aug 16	5 Chapter Poker Run	Tampa FL
Sep 11-13	Region "A" Rally	Dothan AL
Oct 16-18	Mississippi District Rally	Biloxi MS

Oct 25	FL2-E Annual Picnic & Benefit	Clewiston FL
Oct 31-Nov 1	Panhandle Getaway	Panama City FL
Nov 2	Ride for Kids, Sarasota County Technical Institute	
Nov 8	FL2-A 30 <sup>th</sup> Anniversary "BizzardRun" West Palm Beach	
Nov 15	Florida District Rider Ed Fair	St Petersburg FL
Dec 6	FL1-S Mingle Jingle	Zephyrhills FL

## ***2009 FLORIDA GWRRA EVENTS***

Jan 10-11	CD Conference	Kissimmee FL
Jan 17	FL2-L Chapter Rally	Lakeland FL
Jan 25	FL2-D Four Chapter Breakfast	Melbourne FL
Feb 8	South Florida Ride For Kids	
Mar 12-14	Florida District Rally	Kissimmee FL
Mar 29	FL1-E2 Am Diabetes Assoc. Poker Run	Orlando FL
April 18	FL1-W Green Eggs & Ham Poker Run	Orlando FL
May 9	FL1-F2 Poker Run/Motorcycle Rally	Ocala FL
Nov 14	Florida District Rider Ed Fair	St Petersburg FL

## ***LOCAL DINNER RIDE SCHEDULE*** ***(All Rides Depart at 6:30 pm)***

Jul 17	Pace's	Bainbridge	#1
Aug 21	Seinyard's	Woodville	#4
Sep 18	Crawdaddy's	Thomasville	#6
Oct 16	R J's House of Catfish	Hwy 20	#7
Nov 13	Chicken Pilau	Coonbottom	Due to heavy traffic drive individually
Dec	Christmas Party	To Be Announced	

### **Departure Points**

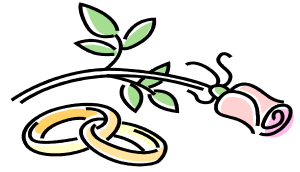
- #1 - Hardee's at North Monroe Street & Capital Circle NW
- #2 - Circle K at Hwy 20 & Capital Circle West
- #3 - Circle K at Crawfordville Hwy & Capital Circle SW
- #4 - Shell Station at Woodville Hwy & Capital Circle SW
- #5 - Citgo Station at Hwy 90 & I-10 East (Cross Creek)
- #6 - Publix at Thomasville Road (Hwy 319) & Bradfordville Road
- #7 - Pilot Truck Stop at I-10 West & Hwy 90



## July Birthdays

Mike Share – 7/5

Sonny Rollo – 7/29



## July Anniversaries

Marvin & JoNell Culverson – 7/17

Jesse & Rita Hodsdon – 7/24

## August Birthdays

Arnold Watts – 8/1  
Bill Talbott – 8/7  
Dave Ventry – 8/15

Jack Henderson – 8/5  
Pat Ventry – 8/7  
Carol Harris – 8/28

Ray Henley – 8/7  
Jesse Hodsdon – 8/14  
Ken Rouse – 8/28

## August Anniversaries

Charles & Linda Couch – 8/14

Dave & Pat Ventry – 8/14

**KUDOS  
WELCOME**

Invite your neighbors and friends to our meetings! We'd love to have them visit!!!

**NEW BIKE CLUB**

**Notes From Last Meeting**

What You Missed If You Weren't There:  
By Leucetia:



# First Coast Honda



**OUTLET MALL EXIT • ST. AUGUSTINE**

OFFICIAL SPONSOR OF THE FLORIDA DISTRICT GWRRA AND PROVIDER OF THE NEW GOLDWING FOR THE ANNUAL RIDER EDUCATION RAFFLE

## SPECIAL GWRRA VIP PROGRAM

WITH DISCOUNTS ON PARTS, ACCESSORIES, APPAREL AND SERVICE

RATES AS LOW AS 0% ON NEW GOLDWINGS

WE TRADE & BUY ANY USED GOLDWING

SERVICE & PICKUP DELIVERY IN

CLAY, DUVAL, FLAGLER, NASSAU, PUTNAM, VOLUSIA AND ST. JOHNS COUNTIES

CALL FOR DETAILS

CALL FOR 08 PRICING

COURTESY GOLDWING LOANERS ARE AVAILABLE FOR ANY GOLDWING SERVICE



HONDA PERFORMANCE FIRST™



SPECIALIZING IN GOLDWING PARTS, ACCESSORIES & INSTALLATION



ORDER YOUR CUSTOM TRIKE TODAY!

# First Coast Honda



Located on State Road 16 (outlet mall exit) between I-95 & US 1

[www.firstcoasthonda.com](http://www.firstcoasthonda.com)

FINANCE PLANS FOR EVERYONE ST. AUGUSTINE

800.549.1992

