

## GOLD WING ROAD RIDERS ASSOCIATION

January 2006

GWRRA Chapter FL1-A2, established 1982

NATIONAL OFFICE Don & Cindy Brock, Executive Director (800) 843-9460

SOUTHEAST REGION A DIRECTOR Larry & Patty Lingo (813) 986-3567

DISTRICT DIRECTOR Bob & Nancy Shrader (813) 885-7963

### CD Gold Line

## Back Again

At long last we're getting a newsletter out. It's been a difficult road getting this up and running and I appreciate all the efforts of those of you who helped us start up again.

We had our annual Christmas party Thursday, December 15, at Marie Livingston's Steak House. The food and the company was excellent. We had the "Yankee Gift Swap" again this year and as usual this generated a lot of laughs.

We'd like to thank our ride committee for all the Saturday rides, overnight rides and dinner rides they planned for us in 2005. We had some great times! We enjoyed every one we were able to participate in. Thank you Charles, Brian, George and Bob-o-Lou for a stellar riding year. Looking forward to 2006.

We hope everyone had a happy holiday season. We burned the roads up between Orlando, Tampa and Tallahassee trying to see all of our children and going to the BUCs games.

Jim and Dianne, George and Pat, Brian, Leucetia and I will be attending the CD Conference in Tampa January 6<sup>th</sup>, 7<sup>th</sup> and 8<sup>th</sup>. We'll be bringing back lots of new information to share with you.

It's time to get busy on our rally. George has had verbal confirmation on three/four big time vendors who plan to attend. It appears that we may have from 8-18 vendors this year. We'll discuss the final details at our January 12<sup>th</sup> meeting. Our flyers are ready for distribution. If anyone needs flyers before the meeting contact me and I will make arrangements to meet you with as many as you need.

Everyone please come to the January meeting and be prepared to register for the rally and pay your fees in advance. Don't forget to bring any door prizes you have collected to the meeting. We also need any "goodie bag" stuffers. Please request a prize or bag stuffer (pencils, pens, samples, etc.) from everybody you do business with and leave them a flyer.

We wish to extend our appreciation to Vanessa Shivers for her service as our Treasurer. Great job! Welcome our new Treasurer, Dianne Zumbrunn.

See you at the January meeting,  
Lenton and Leucetia

**CHAPTER DIRECTOR**  
Lenton & Leucetia Stephens  
(850) 539-5084  
[Lstephens@ene.com](mailto:Lstephens@ene.com)

**\*ASST. CHAPTER DIRECTOR**  
Brian Eiler  
(850) 562-0999  
[mrfixall101@home.com](mailto:mrfixall101@home.com)

**SECRETARY/TREASURER**  
Dianne Zumbrunn  
(850) 893-6990  
[dz32309@hotmail.com](mailto:dz32309@hotmail.com)

**RIDE COORDINATOR**  
Charles Couch 562-1399  
[honda@nettally.com](mailto:honda@nettally.com)

**RIDE COMMITTEE**  
Charles Couch  
George Walsh  
Bob Caraway  
Brian Eiler

**\*RIDER EDUCATOR**  
Jim Zumbrunn  
(850) 893-6990  
[dz32309@hotmail.com](mailto:dz32309@hotmail.com)

**NEWSLETTER EDITOR**  
Leucetia Stephens  
(850) 544-0573  
[leu3241@earthlink.net](mailto:leu3241@earthlink.net)

**\*PUBLIC RELATIONS**  
George Walsh  
(850) 539-1228

**PHONE COORDINATORS**  
Sonny Rollo  
(850) 562-4293  
George Walsh  
(850) 539-1228

**SUNSHINE**  
Carolyn Campbell  
(850) 997-4901  
[Carolync53@sbcglobal.net](mailto:Carolync53@sbcglobal.net)

**WEBMASTER**  
Karen Share  
(850) 9250345  
[k1064@hotmail.com](mailto:k1064@hotmail.com)

[floridadd@msn.com](mailto:floridadd@msn.com)

<http://www.canopyroadcruisers.com/>

*Positions available: contact Lenton to get involved!*

**CD Gold Line** (continued from page one)

Ride Safe,

**Lenton**

Chapter Director

## We're on the Net!

Visit our web site at

<http://www.canopyroadcruisers.com/>

Send in your e-mail address to be  
on the Chapter e-mail list!

[y.shivers@worldnet.att.net](mailto:y.shivers@worldnet.att.net)

**PLEASE  
PATRONIZE  
OUR  
SPONSORS**

**YOUR AD WOULD LOOK GREAT HERE!**

**539-5084**

***Birthdays***

Chris Moore – 1/3  
Lettie Stith – 1/13

Sheila Carroll – 1/13  
Gus Daniels – 1/18  
Wesley Shivers – 1/24

Donna Daniels – 1/13  
Steve Carroll – 1/23

***Anniversaries***

Ray & Linda Henley

***Time to Re-Up***

for January 2006

None

***Do you know a member with illness or death in their immediate family? Call Carolyn Campbell, Sunshine Chairperson, 997-4901.***

**WANT TO REACH OVER 80 MOTORCYCLE ENTHUSIASTS?**

***Advertise!!***

Low rates: only \$15.00 for a business card size ad for 3 months! Call the Advertising Department - (850) 980-0259 (ask for Faith) or e-mail: [aries12@comcast.net](mailto:aries12@comcast.net)

BUSINESS CARD SIZE ADS  
\$15.00 for 3 mos./\$50 per year  
1/4 page \$25.00 for 3 months  
1/2 Page \$35.00 for 3 months  
Full Page \$50.00 for 3 months

## *Next Month's Birthdays*

Carolyn Campbell – 2/3  
Hugh Waller – 2/12

Karen Share – 2/3  
Mary Ann McKee – 2/16  
Gary Allen – 2/27

Durell Daniels – 2/8  
Margaret Parmer – 2/22

## *Next Month's Anniversaries*

None

## *Kudos*

Vanessa Shivers – retiring Treasurer  
Karen Share – Newsletter Assistance

## *Welcome*

Shirley Ryan  
Rich Reffner – relocated from South Florida to Quincy

## *"New Bike" Club*

## *Get the Lead Out Award*

---

## *GET THE LEAD OUT AWARD*

is waiting for you!  
Got an article? Call the editorial office:

(850) 539-5084  
or e-mail: [leu3241@earthlink.net](mailto:leu3241@earthlink.net)

Articles may be submitted in WORD 2003  
or other convertible format.

---

### *Editor's Corner*

By Leucetia Stephens

Next month we hope to have additional articles and our advertisements back in place. Thanks for your patience.

NEWSLETTER DEADLINE: 4th THURSDAY

PUBLICATION: 2nd THURSDAY

Please let us know if you no longer want a newsletter -  
they cost us \$1.53 each!!!

*Safety Corner*  
by Jim Zumbrunn  
Rider Educator

**Headline**

**Headline**

By

*Swap Shop*

Free to Chapter FL1-A2 members  
call 980-0259

**Need a Chapter shirt or cap?**

Contact George Walsh at (850) 539-1822

*GWRRRA News*

**Headline**

Text

***Don't forget to sign up your  
co-rider!***

## ***LOCAL RALLIES & EVENTS***

*Many flyers available at the meeting from Lenton Stephens or Brian Eiler. Call Charles, Brian, George or Bob-o-Lou or the Telephone Coordinators for more information on scheduled and unscheduled rides!*

### ***Lenton & Leucetia Stephens***

Chapter Director  
Chapter FL1-A2  
149 Rozena Loop  
Havana FL 32333  
(850) 539-5084

### ***GOLD WING ROAD RIDERS ASSOCIATION, INC.***

(A Non-Profit Organization)  
Established 1977

Chapter meetings held every 2nd Thursday  
6:30 p.m., Golden Corral, N. Monroe Street  
Tallahassee, FL

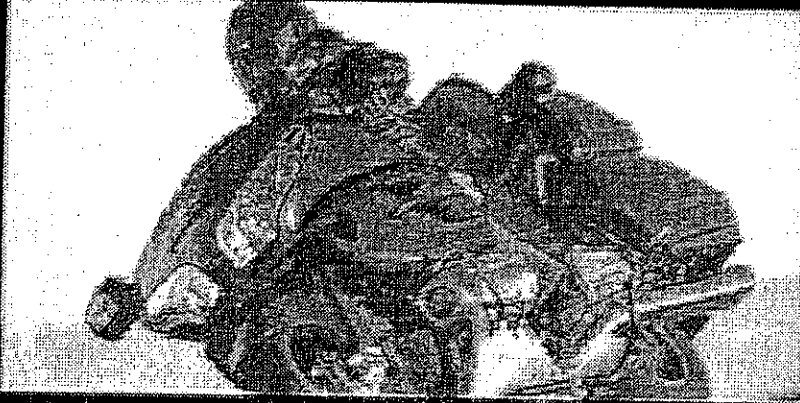
### ***Supper rides every 3rd Thursday***

Dinner social every 4th Thursday  
We miss you when you're not there!

Welcome to all visitors and new members!!!  
We are glad you are with us.

# THE CYCLE SHOP

**Time Has Come.**



©Gold Wing

**CALL FOR MORE INFORMATION**

**850-576-6326**

## THE CYCLE SHOP

4003 W. Pensacola St.  
Tallahassee, FL 32304



850-422-BIKE  
(2433)

2218 N. Monroe St. Visit Us Online:  
Tallahassee, FL 32303 [www.ruffriderswear.com](http://www.ruffriderswear.com)

## ***2006 FLORIDA GWRRA EVENTS***

12-20-05

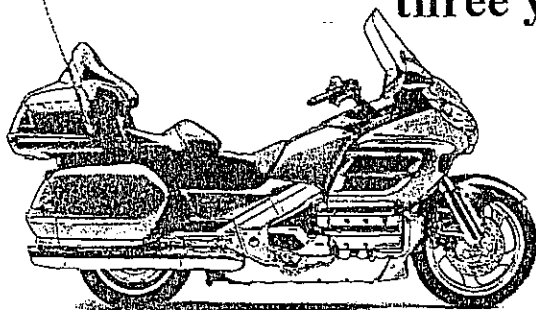
Jan. 6-8	CD Conference	Tampa
Jan. 21	FL2-L Poker Run	Lakeland
Jan. 29	4 Chapter Breakfast	Melbourne
Feb. 11	FL2-N Western Round Up	Cocoa
Feb. 17-18	FL1-A2 Mini Rally	Tallahassee
Feb. 18	FL2-B2 Spaghetti Social	Sarasota
Feb. 23-25	Florida District Rally	Kissimmee
Mar. 3-12	FL1-H Goldwing Getaway	New Smyrna
Mar. 25	FL1-W Breakfast Poker Run	Apopka
Mar.30-31	Alabama District Rally	Mobile
Apr. 8	FL1-B Rally	Brandon
Apr. 9	FL2-R Gourmet Goulash	Clewiston
Apr. 22	FL1-X Poker Run	Keystone Hts.
May 26-27	FL1-Y Poker Run	Gainesville
June 17	FL1-J Bug Run	Jacksonville
Nov. 18	FL1-A Poker Run	Tampa



# Champions Honda of Leesburg

## TRAVEL IN FIRST CLASS.

Discover what it's like to ride a legend. The Honda Gold Wing, *Cycle World's* favorite touring bike three years in a row!



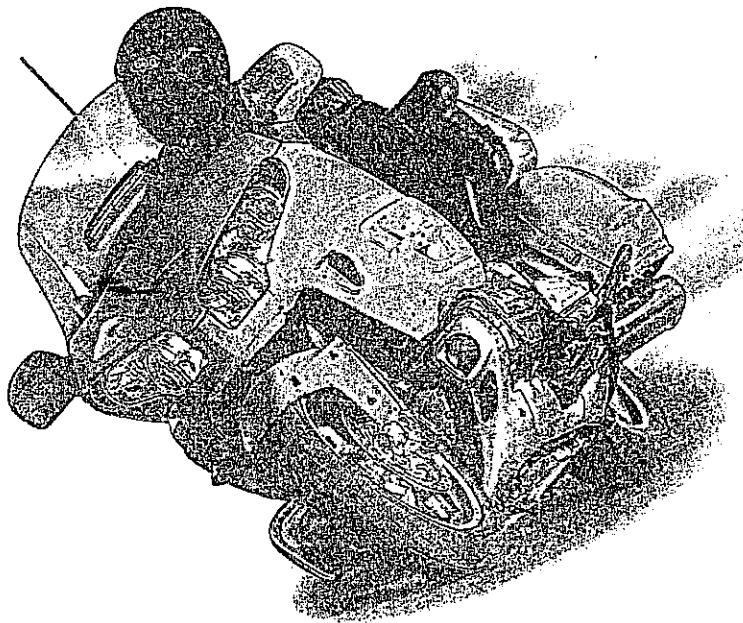
The legendary motorcycle beats the competition on performance alone. Its 1832cc six-cylinder engine and easy handling make it the smoothest ride on the road. And it wouldn't be a Gold Wing without all the bells and whistles, like cruise control and electric reverse. And there's even an ABS model with anti-lock brakes.

Financing Available

We Take Trade-ins



2408 W. MAIN ST.  
LEESBURG, FL  
STORE HOURS:  
TUES.-FRI. 9AM TO 5:30PM  
SATURDAYS 9AM TO 4PM  
CLOSED SUN. & MON.



Honda.com ALWAYS WEAR A HELMET, EYE PROTECTION AND PROTECTIVE CLOTHING, AND PLEASE RESPECT THE ENVIRONMENT, OBEY THE LAW, AND READ YOUR OWNER'S MANUAL THOROUGHLY. For rider training information or to locate a rider training course near you, call the Motorcycle Safety Institute at 1-800-466-9227. *Cycle World*, 7/01, 7/02, 7/03, Gold Wing and Performance First are trademarks of Honda Motor Co., Ltd. (10/03)

[www.hondaofleesburg.com](http://www.hondaofleesburg.com)

800-777-7252