

—CANOPY— ROAD *Cruisers* Gold Wing Road Riders Association



GWRRRA Region A
FLI-A2
Established 1982

The official publication of the GWRRRA Canopy Road Cruisers, Tallahassee, Florida 32303 January 2004

CD Goldline



HAPPY NEW YEAR !

I hope everyone had a good Christmas. Marcy, the girls and I went to Michigan for a week. We didn't have as much snow as we usually get, but we did at least have a white Christmas! Lauren expressed an

interest in learning how to ride a dirt bike a few months ago, so Santa Clause brought her a SUZUKI 125. We went out for her first practice session just before Christmas and she did pretty well. I see another dirt bike in my future so I can ride with her!

I hope to see everyone at our January meeting, as we will be concentrating on our upcoming Chapter Rally. We will need help in soliciting local businesses for door prizes. Don't forget our Chapter ride to Julia Mae's on Jan 10th to meet up with fellow chapters from Panama City and Dothan.

As the New Year unfolds, I look forward to seeing everyone at our different events. I'm particularly looking forward to our trip to north Alabama to the Barber Motorsports Museum (<http://www.barbermotorsports.com/>). I'm hoping to come up with another weekend Chapter trip later in the year. If anyone has an idea please let me know.

Ride Safe,
Hugh
Chapter Director

NATIONAL OFFICE
EXECUTIVE DIRECTOR
Mike & Judy Wright
(219) 248-8166

SOUTHEAST REGION A DIRECTOR
Larry & Patty Lingo **NEW!**
(813) 986-3567

FLORIDA DISTRICT DIRECTOR
Bob & Nancy Shrader
(813) 885-7963
floridadd@msn.com

CHAPTER DIRECTOR, Hugh & Marcy Waller (850) 562-4542 hmjenwal@aol.com
ASST. CHAPTER DIRECTOR, Lenton Stephens (850) 539-5084 lstephens@ene.com
SECRETARY/TREASURER, Vanessa Shivers (850) 421-1334 vshivers@comcast.net **NEW!**
RIDE COORDINATOR, Charles Couch (850) 562-1399 honda@nettally.com
RIDER EDUCATOR, open
PUBLICATIONS, Faith Martin (850) 562-9480 aries12@comcast.net
PUBLIC RELATIONS, open
PHONE COORDINATORS, Sonny Rollo (850) 562-4293, George Walsh (850) 539-1228
SUNSHINE, Carolyn Campbell (850) 997-4901 carolync53@sbcglobal.net
WEBMASTER, Karen Share (850) 925-0345 k1064@hotmail.com (**permanent**)
<http://www.canopyroadcruisers.com/>
Positions available: contact Hugh to get involved!

Highlights

What You Missed!

Birthdays & Anniversaries
Rally Committees/Assignments
PAGE 2

Safety Corner

Pre-ride Briefing
by James R. Davis
PAGE 3

Features

Christmas Party Pix
PAGE 4

Wing Ding (Part 4)

by Pat Gordon
PAGE 5

Swap Shop

Dave Ventry's "Ace" in the Hole
PAGE 6

Local & Regional

Rallies and Events
PAGE 7

Next Chapter Meeting:

Golden Corral
January 8, 2004
6:30 Eat
Meeting to follow



What You Missed

Christmas Party Highlights

-We had a terrific turn-out this year for the Christmas Party.

-The food was great as always at Edenbrook. The staff always does a wonderful job and we certainly appreciate it. This year each table setting had two candy canes for each member. It added the perfect festive touch.

-The Santa Candy Dish and Travel Mugs were hot items this year. Len and I lost some coveted tools, but managed to hang onto a really nice tire pressure gauge.

-Our meeting was unusually short, but Hugh had some exciting news about the upcoming Rally. We are teaming up with The Cycle Shop and a "save animals" organization. They will sponsor the Poker Run. The ride will end at the Cycle Shop.

-Mary Lee Rouse announced their daughter, Debra Stanford & family will be on Trading Spaces (yes, the T.V. show) February 15th, 7:00 PM on the Learning Channel (cable 33). Debra, husband Jeff, manager at Prestige Infiniti, daughter Heather, age 14 and son Logan, age 10 will be "trading spaces" with the neighbor 2 doors down.

-Chapter Members will be eligible for Door Prizes at our Rally in February, but not for the Grand Prize(s). This is a change from past Rallies.

-Charles passed around a list of prospective restaurants for everyone to vote on for the upcoming Dinner Ride Season. If you have a favorite restaurant, give him a call to get it on the list.

-We didn't have a 50/50.

Wishing you a safe and prosperous New Year.



Motorcycle Wisdom

-There's something ugly about a NEW bike on a trailer.

Attention Members:

Three-Chapter Ride to Julia Mae's on January 10, 2004.
Please RSVP Charles Couch by January 1, 2004
(850) 562-1399 honda@nettally.com

January Birthdays

Chris Moore	01/03
Sheila Carroll	01/13
Donna Daniels	01/13
Lettie Stith	01/13
Gus Daniels	01/18
Steve Carroll	01/23
Wesley Shivers	01/24

January Anniversaries

Ray & Linda Henley	01/11
--------------------	-------

February Birthdays

Carolyn Campbell	02/03
Karen Share	02/03
Durell Daniels	02/08
Hugh Waller	02/12
Mary Ann McKee	02/16
Margaret Parmer	02/22
Gary Allen	02/27

February Anniversaries

None

January Re-up

Len & Faith Martin
Mike Mayer
Jack Schardine

Get 10 FREE

50/50 Tickets at the next meeting, if this is Your GWARRA # 003188



Time to update our records.

If you have joined in the last year (November 2002 to November 2003) and are not on our Anniversary, Birthday or Re-up list and would like to be, please send me that information. We don't get the Birthday & Anniversary information from GWARRA. The Re-up list includes people that are GWARRA members but may not be members of our club.

Rally Committees / Assignments

Flyer Update & Printing & Signs

Faith Martin

Door Prizes

Wesley & Vanessa Shivers

Tickets

Charles Couch

Games

Bob Carraway & Ed Padgett

Poker Run

Hugh Waller w/Cycke Shop

Entertainment

Hugh Waller

Vendors

Sonny Rollo

Site Setup & Cleanup

Marvin Culverson

Registration

Vanessa

P.A. System

Mike Share

Security

Jim Godwin

Food?

Call or e-mail the Committee

Chairmans to volunteer to help.



Pre-ride Briefing

By James R. Davis

Before I let a passenger onto my bike I host a briefing with them. I explain that so long as they are on my bike THEY are the boss - that if they want to slow down, or to stop, for any reason, we will do so. I explain that it is not my intention to scare them, ever, while they are on the bike, but to help them enjoy the experience. In exchange for this there is a price: They have four jobs while riding as passenger, and they must agree to get on and off the bike only with the permission of the driver. I explain the 'passenger twist' where they connect their helmet cord while facing the bike, then do a full turn clockwise so that the cord wraps behind them before they get on the bike. That they get on and off only while I am on the bike, which is in neutral, and have both feet down and the side stand up (this, because if the side stand is down and they plump themselves on the saddle they will compress the shocks and that will lever the bike to the right - possibly all the way over onto its side!) I nod and tell them it is OK to get on the bike when I'm ready for them. I do the same when I'm ready for them to leave the bike. Finally, I ask that when they mount and dismount the bike they try to keep their weight centered on the bike - that they not pull the bike towards them but, rather, push themselves towards the

bike. I explain that while we are moving they can talk to me if they want, and that they may use the PTT button near their left hand to talk on the CB, but as to moving around, I'd prefer that they pretended to be a sack of potatoes (actually, I tell them they can move about, just not suddenly) - that they NOT try to help me through the turns - that they not lean in anticipation or when we are in a turn. I tell them that I have never had an accident, but that no matter what happens while we are moving, they are to keep their feet on the passenger floorboards and never, ever, try to touch the ground with their feet to try to hold up the motorcycle. I show them the saddle-bag guard rails and point out that they are heavy steel, like 'roll bars', and will protect their legs only so long as their feet remain on those floorboards. Oh, as to those 'jobs' they have:

- ◆ They are to wave at all motorcyclists approaching us in the opposite direction
- ◆ They are to wave at all policemen who are on their feet
- ◆ They are to wave at all children that show any interest whatever

- ◆ They are to demonstrate to the world that they are enjoying themselves, particularly at all rest stops.

Failing any of those jobs, I declare, will result in them having a new job when the ride is over - the spokes! (There are no spokes on my Wing, of course.) As to my own personal rules while riding with a passenger:

The only thing I want to 'show off' is that riding a motorcycle can be safe and enjoyable

I wish to challenge myself with the task of trying to shift gears without the passenger being aware of the activity (no head snaps in either direction.)

I want to start and stop with the passenger never quite sure that we have started to move or that we have come to a full stop - i.e., smoothness all around.

Copyright © 1992-2001 by The Master Strategy Group, all rights reserved.

The Master Strategy Group is the author of Group Riding Guidelines. Highly recommended reading for all members. You can request a copy of this 16 page document to be e-mailed to you. <http://www.msgrgroup.org/GUIDE.html>

Advertise your business here. Great rates!
E-mail Faith Martin for more information.

Christmas Party Pix

Photos courtesy of Len Martin

Last Year we had no photographs of our Christmas Party. This year we have enough for several issues. What a great turn-out we had.



Above: A delicious buffet was prepared by the Edenbrook staff.



Left:
What a pleasant surprise to see Gus Daniels and his guests this year.



Right:
Ken and Mary Lee Rouse, Jack Schardine and Carol Ergenbright take a moment to smile for the camera.



Left:
Melvin & Wanda Schmidt and Carolyn Campbell take a breather before heading for the gift exchange.





WING DING 2003 by Pat Gordon

Pat & George left Tallahassee, Florida, June 27th and headed for Wing Ding 2003 in Madison, Wisconsin. So far they have met some vendors from Hawaii heading for the Wing Ding festivities, weathered a thunderstorm, learned a lot about finding restaurants in Wisconsin, visited the "House on the Rock", bought goodies from the Wing Ding Vendors, enjoyed a concert by the Diamonds, toured the quaint Alpine town of New Glarus, and enjoyed an entertaining fireworks show. The journey continues...

Saturday, July 5th we were up at 7:00 there had been an early morning rain and was still cloudy. After packing and breakfast at Denny's we hit the road North at 10:30. From Madison we drove north on US 15 past Beaver Dam and Fond Du Lac, US 41 N. past Oshkosh and Appleton to Green Bay. We drove around town in Green Bay took pictures and stopped for lunch in town. The Culver's signs had tempted us for long enough so we had to stop at one and see what Frozen Custard and Butterburgers were. It is a fast food chain all over the area. The burgers are fresh never frozen ground chuck on a buttered bun. We ate the burger without the bun. The custard is made with eggs and extra cream, richer than ice cream, but I only had a sample taste.

We continued on US 41 along Lake Michigan to Menominee and stopped for the night at Best Western and dinner at Escanaba. Much of the lake so far is not visible from the highway. The view is obscured by trees and homes, but it was a cooler ride along the Lake. It had been 90 degrees in Madison in the afternoons. I expected the weather to be cooler up north.

Sunday, July 6th we were up at 7:00, breakfast at the hotel and drove on highway 2 to St. Ignace on the way to Sault Ste. Marie. On US Highway 2 in the Upper Peninsula on a new black top road a sign read "do not pass when opposing traffic is present". Thanks to the DOT for their consideration.

South of St. Ignace we passed a long stretch of sandy beach on Lake Michigan with sand dunes on both sides of the road. If the cool wind was not



Michigan Dunes

blowing in my face I would have thought we were in Florida. There were a few people in the water, but I am sure it must have been cold water. I was surprised at how clean the lake water is.

We drove around town and had lunch and stopped to view the Mackinaw Bridge, then drove on to Sault Ste. Marie. Sault Ste. Marie is the third oldest settlement in the United States. The "Soo Locks" on the St. Mary's River were quite interesting. The locks connect Lake Huron and Lake Superior and are part of the St. Lawrence Seaway where large volumes of freighters pass. The museum at the locks explained how they worked. We took a tour on a trolley through town and over the bridge to Canada, where our ID was checked then the tour train turned around and went back to the US. We had dinner at the Antlers res-

taurant that was recommended to us by some local folks. The interior was quite unique but the food was not memorable. After dinner we returned to the hotel and casino.

The Kewadin Hotel and Casino is beautiful, there is a mall, restaurants, Native American museum and gift shop, as well as a full casino. The hotel which is on an



Mackinaw Bridge

Indiana reservation gave us \$20 in tokens when we checked in. I played the slots until all the tokens were gone while George played Black Jack. We both broke even and should have quit when we were ahead.

To be continued in next issue

Editor's Note:

This story is about 4 pages of text so I've decided to do it in installments.



FOR SALE:

Kuryakyn triple exhaust extensions; used, very good condition for GL1500
\$ 60.00

Stop and Go tire patch kit - new
\$ 30.00

Chrome windshield trim with Kuryakan lighted bird and bug deflector, installed **\$ 65.00**

Orville Sage custom windshield for GL1500, tinted with large engraved eagle, with engraved wind wings, installed **\$ 175.00**

Call Sonny Rollo at (850) 562-4293 Tallahassee, FL

FOR SALE:

1500 Passenger Floor Board Extensions. \$ 35.00

GL 1500 Fairing Side Vent Covers. \$ 5.00

GL 1500 Trailer Wire Harness. \$ 20.00

GL 1500 Seat Rain Cover. \$ 10.00.

Call Hugh Waller at (850) 562-4542 Tallahassee, FL

FOR SALE:

Air Rider Headsets for 2 helmets with full hook-ups & new batteries.
\$ 200.00.

Call Jerry Langley (850) 984-5618 Tallahassee, FL

FOR SALE:

1997 Time-Out Motorcycle Camping Trailer

Chrome swivel hitch
11lb. propane tank
\$ 2,000.00

Call Jack Schardine (850) 212-1930 Tallahassee, FL

FOR SALE:

1987 GoldWing 1200 Aspencade, 82K miles, Garage Kept, Loaded with extras, Excellent condition.
\$4900 (Negotiable)

Call Richard Lussier at: (850) 539-5161 or e-mail russier@nettally.com Tallahassee, FL

FOR SALE: NEW!

1993 Yamaha Virago XV750 E/C Windshield, Saddlebags, Chrome Engine Guards, Footrest, Chatter Box CB Radio
18,850 Miles
\$2,500.00

Call Connie Hurley at: (850) 683-0806 (H) (850) 689-8114 (W) after 2PM Crestview, FL

FOR SALE: NEW!

2002 Suzuki VL800K2 Intruder Blue/Black
Windshield, Engine Guards, Footrest, Hard Saddle Bags, Chatter Box CB Radio
\$5,500.00

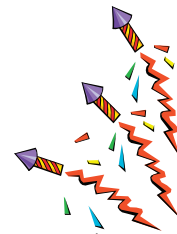
Call Robert Riley (850) 682-4350 Crestview, FL

WANTED:

Stock exhaust system for Valkyrie Tour (561) 968-0535 e-mail: patsea@bellsouth.net Pat Seadorf (Asst. District Director)

WANTED: NEW!

Sears X-Cargo Clamshell for trailer. (Not roof-top model) Good Condition, no cracks. Call Len or Faith Martin (850) 562 9480 or e-mail leonardmartin@comcast.net or faith_martin@comcast.net Tallahassee, FL



Dave Ventry's "Ace" in the Hole

While it may be true we haven't seen much of Dave & Pat Ventry lately, that doesn't mean he's given up his love of cruisin' the highways.

Nope, soon his Goldwing will have to share quarters with his about to be acquired '98Ace Shadow Tourer.

Dave reports he found this "gem" on the GWRRA website. You don't find one like this with only 9K miles on it very often. The only drawback is, it's 895 miles away in Troy, Illinois. They are hoping to leave the afternoon of the 19th of December and have it here before Christmas. He's still watching the waves of snow storms. Dave assures us he's not selling his Wing, just adding to the fleet.



** Swap Shop is free to all current members as space permits. Please send new ads, corrections and deletions to Faith Martin - aries12@comcast.net or call (850) 562-9480 and a copy to Karen Share - k1064@hotmail.com. Display ads may be placed for a nominal fee. Contact Faith Martin for specifications & rates.

2004

- January 10 Three Chapter Ride to Julia Mae's in Carrabelle
RSVP Charles Couch by Jan. 1, 2004.
Depart # 3 - 10:30 AM
- January 15 Dinner Ride-The Landing (formerly Posey's)
St. Marks
Depart # 3 - 6:30 PM
- February 21 **FL1-A2 Rally - Ramada Inn, Tallahassee**
Poker Run hosted by The Cycle Shop
Lunch and Discounts

Departure Points

- # 1: Hardees, N. Monroe
- # 2: Circle K, Highway 20 & Capital Circle
- # 3: Circle K, Crawfordville Highway & Capital Circle
- # 4: Chevron, Highway 98 - Woodville Highway
- # 5: CITGO, Hwy., 90 - I-10 east (Cross Creek)
- # 6: NEW Publix, Thomasville - Bradfordville Roads
- # 7: Williams Truck Stop on Hwy 90 West

Contact Wesley Shivers at (850) 421-1334 or vshivers@comcast.net to volunteer for Door Prize procurement for the Rally.

Need Flyers to pass out for the FL1-A2 Rally in February?
Contact Hugh Waller or Faith Martin. Or download at:
www.canopyroadcruisers.com

Get rid of THE JAGGIES!

Digital Logo Reconstruction

\$ 50.00

One hour minimum
Offer Expires February 15, 2004

Free Consultation on existing marks. Call Faith Martin at (850) 562-9480.

*Will be provided in one resizable digital file format suitable for Offset or Laser Printing.
Other formats available for additional uses.

LONGVIEW studios
VISUAL COMMUNICATIONS



2004

- Jan. 25
FL1-C
7 Chapter Breakfast
Orlando
- Feb. 7
FL1-M
Spaghetti Social
Clearwater
- Feb. 14
FL1-W
New Chapter Kick Off
Apopka
- Feb. 21
FL1-A2
Poker Run
Tallahassee
- Feb. 27 - Mar 6
FL1-H
The Goldwing Getaway
New Smyrna Beach
- Mar. 18 - 20
Florida District Rally
Kissimmee
- Apr. 3
FL1-B
Poker Run and Fun Day
Brandon
- Apr. 17
FL1-R
Rally/Poker Run
Dunnellon
- Apr. 24
FL1-X
Hug Contest & Poker Run
Orange Park



Gold Wing Road Riders Association
Hugh and Marcy Waller, Chapter Director
1921 Harriet Drive
Tallahassee, FL 32303

Friends For Fun,
Safety and Knowledge

Postage



*Happy
New Year!*

Editorial and Advertising Deadlines:
December 26th & January 29th.
Published 1st day of each month.
Please let us know if you no longer
want a Newsletter. To be included
on the Chapter e-mail address list,
contact Vanessa Shivers at:
vshivers@comcast.net
cc: Faith Martin,
aries12@comcast.net
if you want to be included on the
Newsletter e-mail list. The elec-
tronic version is provided as a
PDF file and can be accessed on
our website at
[www.canopyroadcruisers.com/
newsletter.htm](http://www.canopyroadcruisers.com/newsletter.htm)

Canopy Road Cruiser Newsletter
Design & Layout donated by:
Faith Martin
Longview Studios
Visual Communications
2123 Longview Drive
Tallahassee, Florida 32303
(850) 562 - 9480
www.visualresolutions.com

THE CYCLE SHOP

Time Has Come.



Gold Wing®

AS LOW AS **\$ 16,078.00**

Call Today!
850-576-6326

THE CYCLE SHOP

4003 W. Pensacola St.
Tallahassee, FL 32304

Honda of Leesburg
"WORTH THE DRIVE"

Touring Redefined.



Financing Available

We Take Trade-Ins



HONDA
PERFORMANCE FIRST™

Now featuring the biggest engine of any mass-produced motorcycle, the new 1832cc Gold Wing brings performance to the touring class.

*Powerful new 1832cc liquid-cooled horizontally opposed six-cylinder engine produces smooth, effortless power.

*Massive 45mm front fork offers 5.5 inches of travel for a smooth well-controlled ride.

*First ever combination of anti-dive system and LBS system produces outstanding stability when braking at both low and highway speeds.

*Aluminum dual-spar frame and Pro-Link suspension with 2-memory pre-loaded adjustment provide superb riding comfort.

*Rigid Pro Arm single-sided cast aluminum swingarm assures optimum handling.

*All-new, lightweight electronic cruise control system utilizes a 16-bit CPU-controlled, motor-actuated throttle mechanism for increased speed variation sensitivity.

*Advance fuel injection system creates ideal fuel mixture and spark advance for superior driveability.

*Optional Anti-lock Brake System features an electric-motor driven modulator which provides rapid but smooth and precise braking.



20 Point Safety Check, only \$21.00 plus tax. After hours? Need to schedule service? No problem! Just drop us an e-mail. We'll get back to you the next business day. (Be sure to include your phone number.)

For Genuine Honda Parts & Accessories
Log On: www.hondaoffleesburg.com
Or Call: (800)777-7252/(352)787-7252

 **HONDA**
Genuine Accessories™

Honda of Leesburg
2408 W. Main Street
Leesburg, FL 34748
Shop Hours
Closed Sun. & Mon.
Tues.-Fri.: 9am-5:30pm
Saturday: 9am - 4pm

www.honda.com ALWAYS WEAR HELMET, EYE PROTECTION AND PROTECTIVE CLOTHING, AND PLEASE RESPECT THE ENVIRONMENT. Obey the law, and read your owner's manual thoroughly. For rider training information, call the Motorcycle Safety Foundation at 1-800-446-9227. Goldwing and Performance First are trademarks of Honda Motor Co., Ltd.

www.hondaoffleesburg.com

(800)777-7252